

## **How Do I Prevent Trich?**

- ✦ Use young, fertile bulls; all replacements should be virgin heifers and virgin bulls
- ✦ Check bulls yearly; older bulls are more likely to carry the organism
- ✦ Artificial insemination can aid in control
- ✦ Pregnancy check cows yearly
- ✦ Sell all late and open cows to slaughter
- ✦ Keep fences in good repair

## **What Do I Do**

### ***If My Cattle Have Trich?***

- ✦ Work with your veterinarian
- ✦ Sell all bulls to slaughter if you have a positive
- ✦ Sell all open and late cows to slaughter
- ✦ Use all virgin bulls the following year
- ✦ Each situation is unique—work with your veterinarian

## **Can Trich Be Treated?**

- ✦ Bulls remain infected and no approved treatment is available
- ✦ Cows usually clear the infection within a few months, but a few carry the infection to calving
- ✦ Cows with pyometra will remain infected
- ✦ Vaccines help bulls and cows to clear infection but don't prevent infection

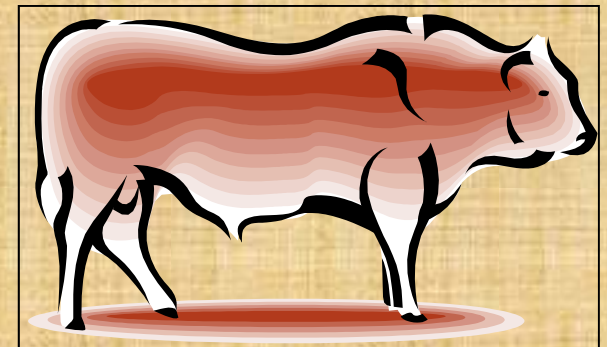
# **Trichomoniasis in Colorado**

Carl C. Heckendorf, DVM

Colorado Department of Agriculture  
Director, Animal Health and Disease Control

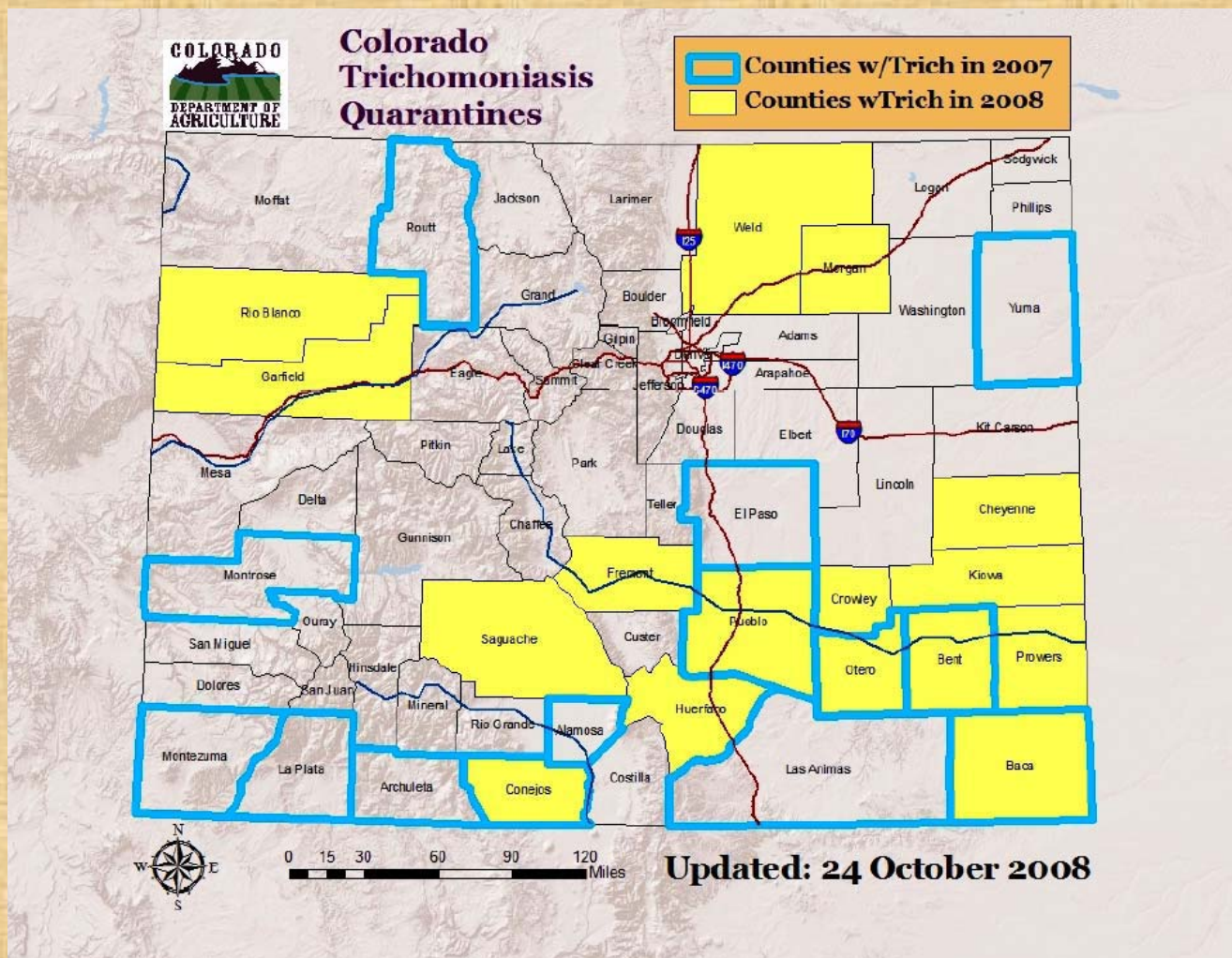


State Veterinarian's Office  
700 Kipling Street, Suite 4000  
Lakewood, CO 80215  
303-239-4161  
[www.colorado.gov/ag/animals](http://www.colorado.gov/ag/animals)



Trichomoniasis, commonly referred to as trich, is a venereal disease of cattle caused by the protozoan parasite *Trichomonas fetus*. Spread by breeding, trich causes infertility, abortions, and, occasionally, chronic uterine infection in dairy and beef cattle. Losses include reduced milk production, reduced calf crop, and delayed breeding.

The main clinical indications of the disease are repeat breeding at both regular and irregular intervals, and occasional abortion. These are fairly observable in dairy cattle. In beef cattle on western ranges the first indication of a potential problem comes at finding at least 10-30 percent of the cows open at the time of fall pregnancy examination.



## How Do I Know If My Cattle Have Trich?

- ✦ Increased number of open and late cows
- ✦ Prolonged calving season
- ✦ Increased abortions are sometimes noticed
- ✦ Definitive diagnosis requires bulls be cultured or tested with PCR by your vet

## How Does Trich Spread?

- ✦ Bulls spread the disease at breeding
- ✦ Older bulls are more likely to carry the organism

